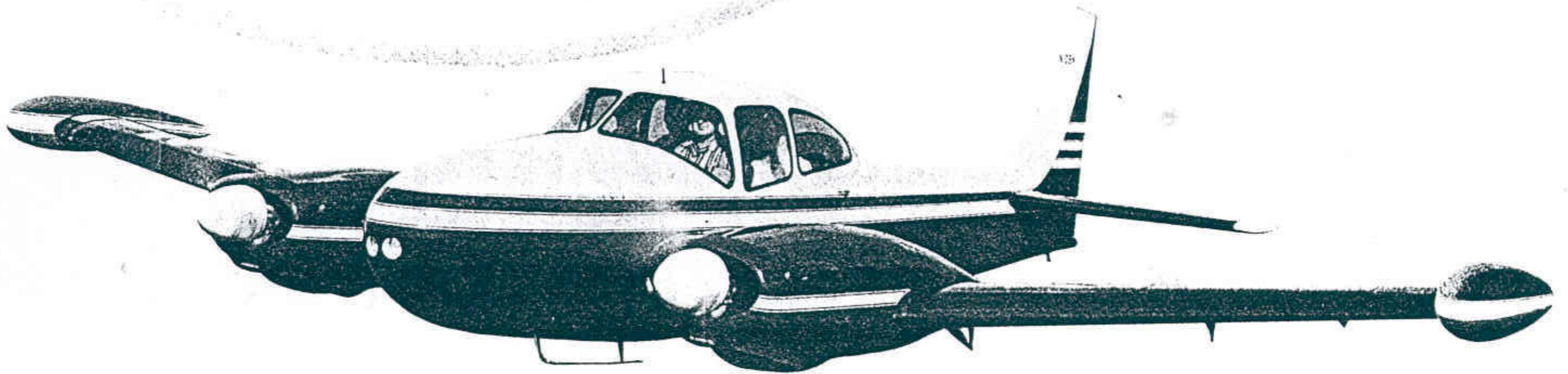


# *Riley*

*twin*

BY TEMCO



→ Twin Engine Safety

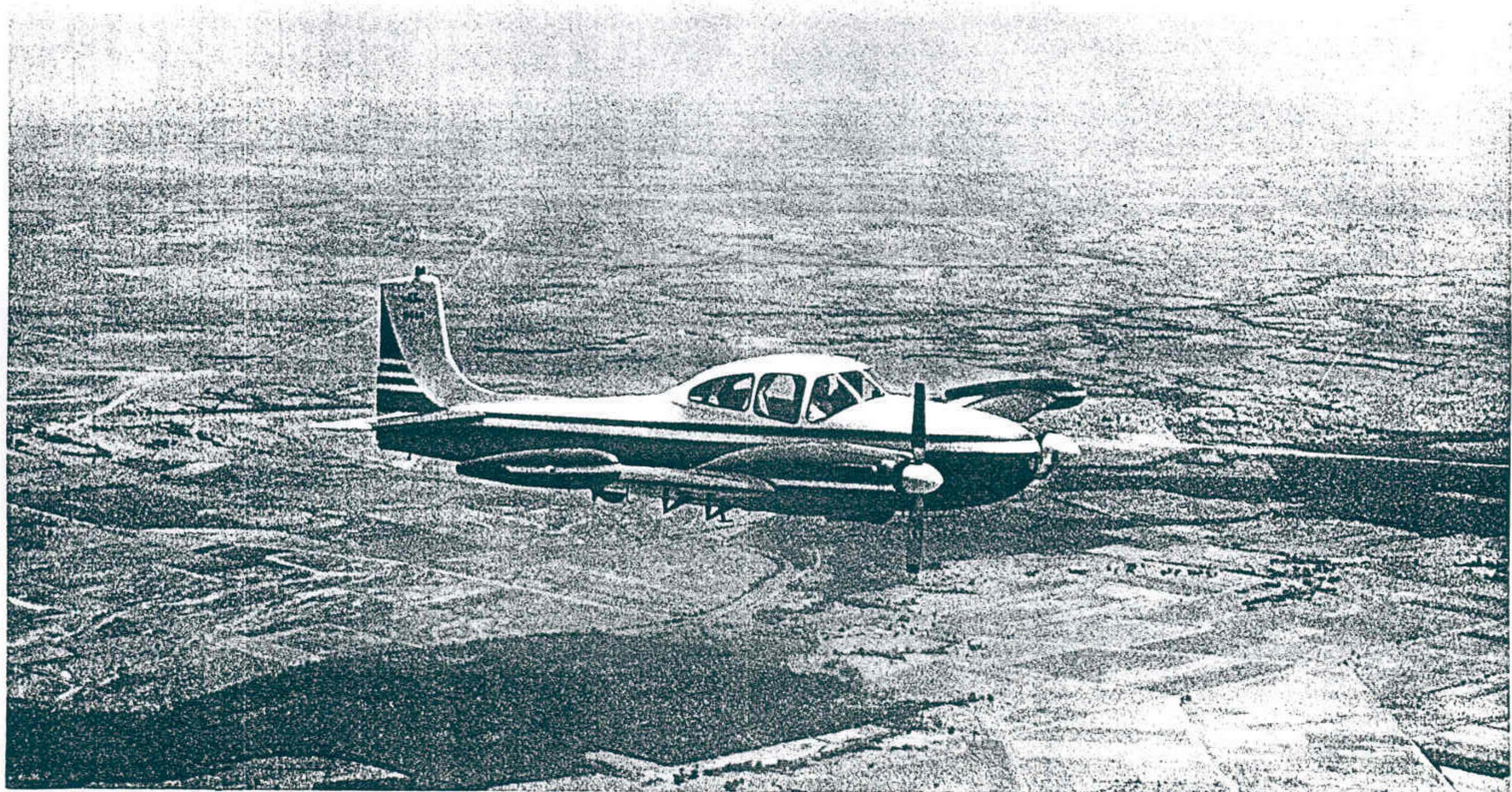
→ 170 MPH Cruising Speed

→ Range Over 1200 Miles

→ Luxurious Interiors

## SPEED and SAFETY

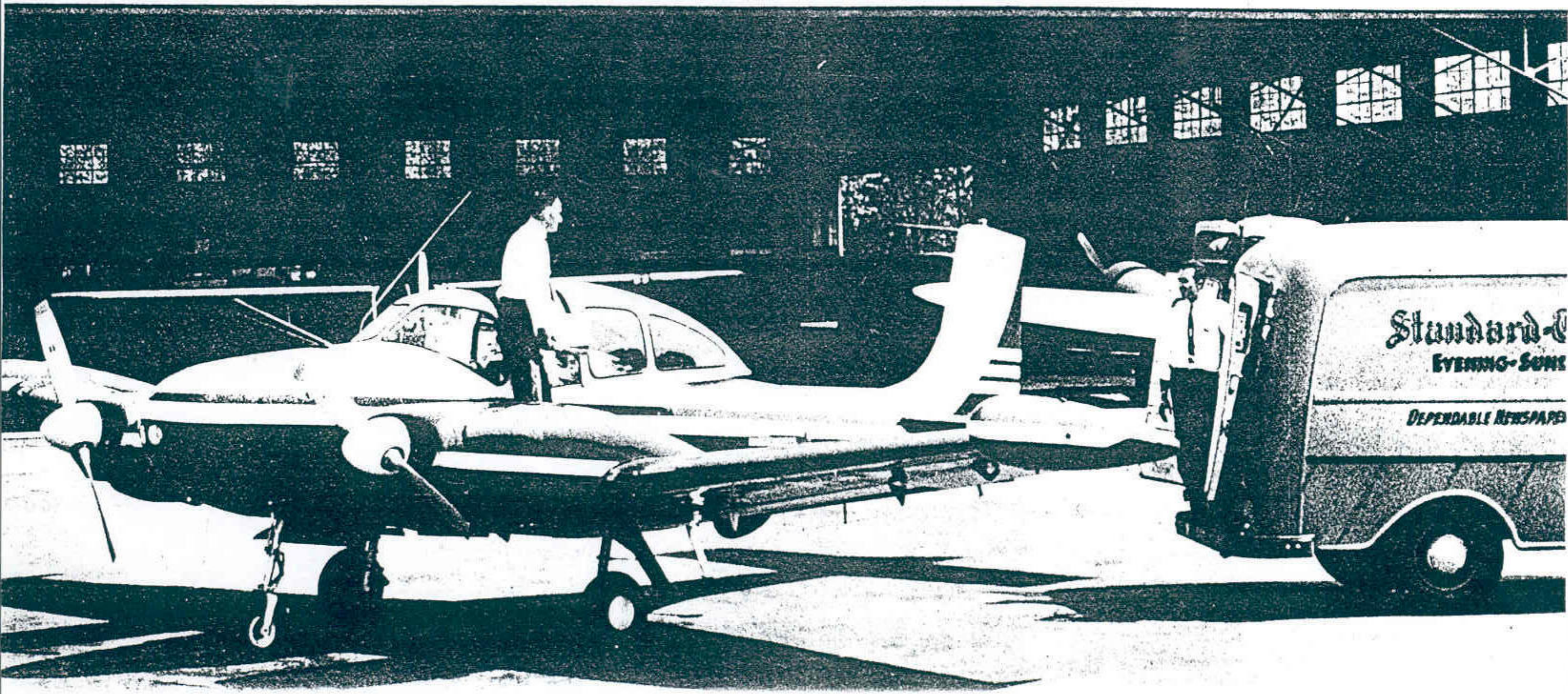
The exceptional power-weight ratio in the twin 170-HP Lycoming engines gives the Riley TWIN added take-off power, 170-MPH cruising speed and a large twin-engine aircraft safety factor. Complete instrumentation, radio night-flying equipment, and full-feathering, metal propellers for efficient single-engine operation add to the Riley TWIN's safety — and its usefulness for every executive aircraft task.



**UTILITY and RELIABILITY**

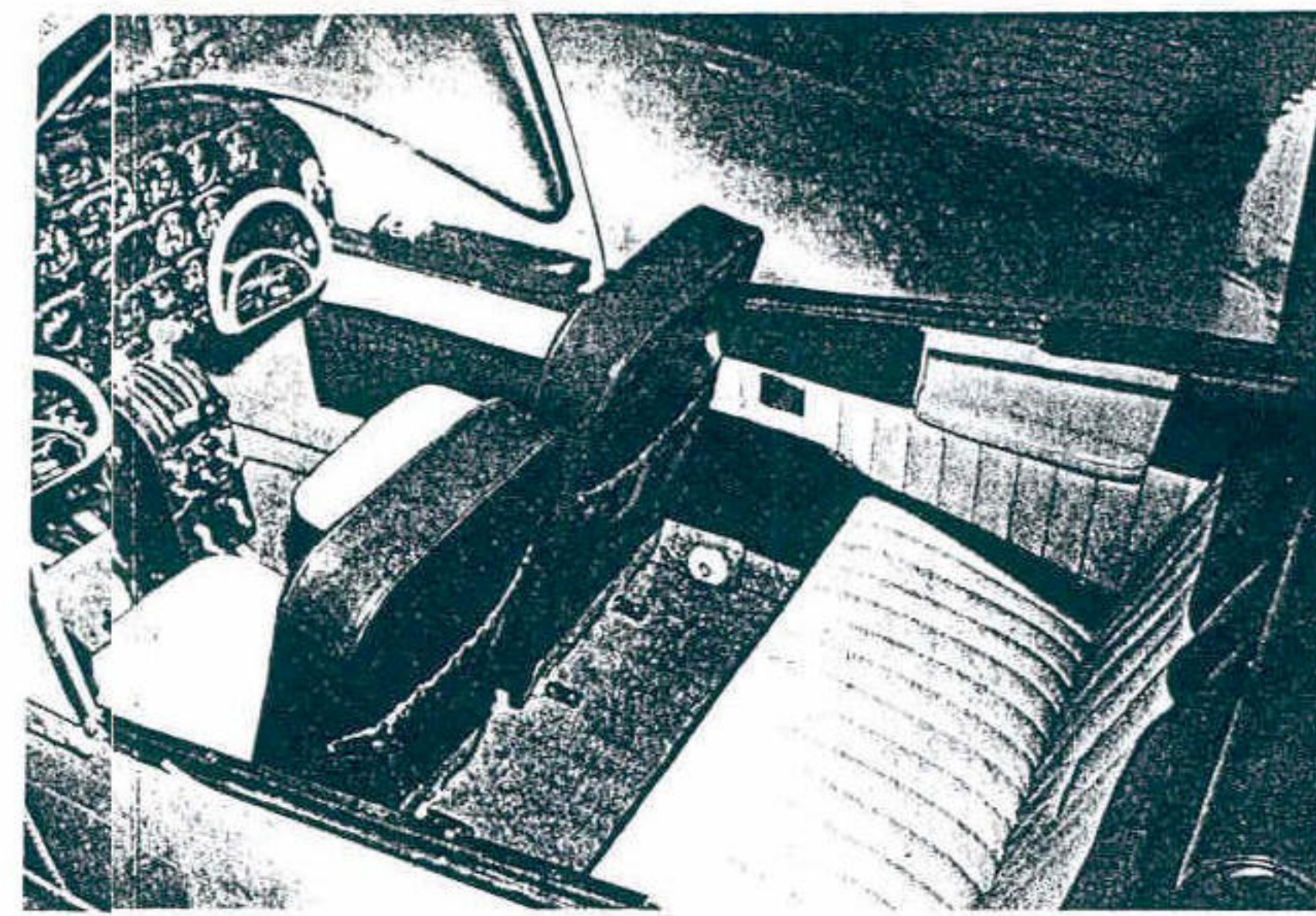
A design for easy maintenance . . . rugged airframe with two dependable engines . . . 25 cubic feet of storage space in two compartments . . . over 1200-mile range . . . these qualities make the Riley TWIN the perfect aircraft for charter service or for utility tasks in industry, on the farm or in recreational areas.

# MASSACHUSETTS AIR INDUSTRIES

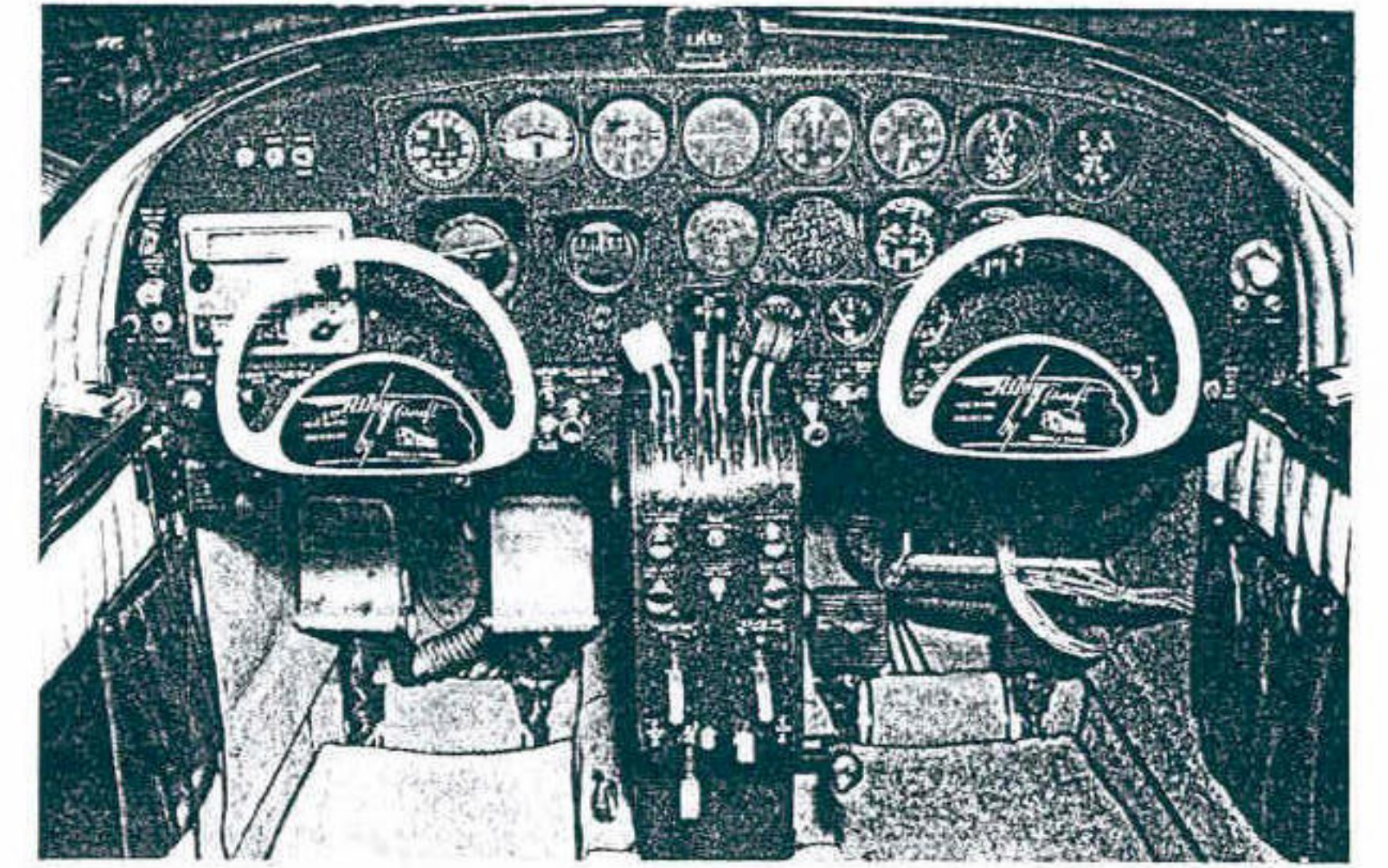


these outstanding features  
 show why the **Riley**  
 is the leading light twin:

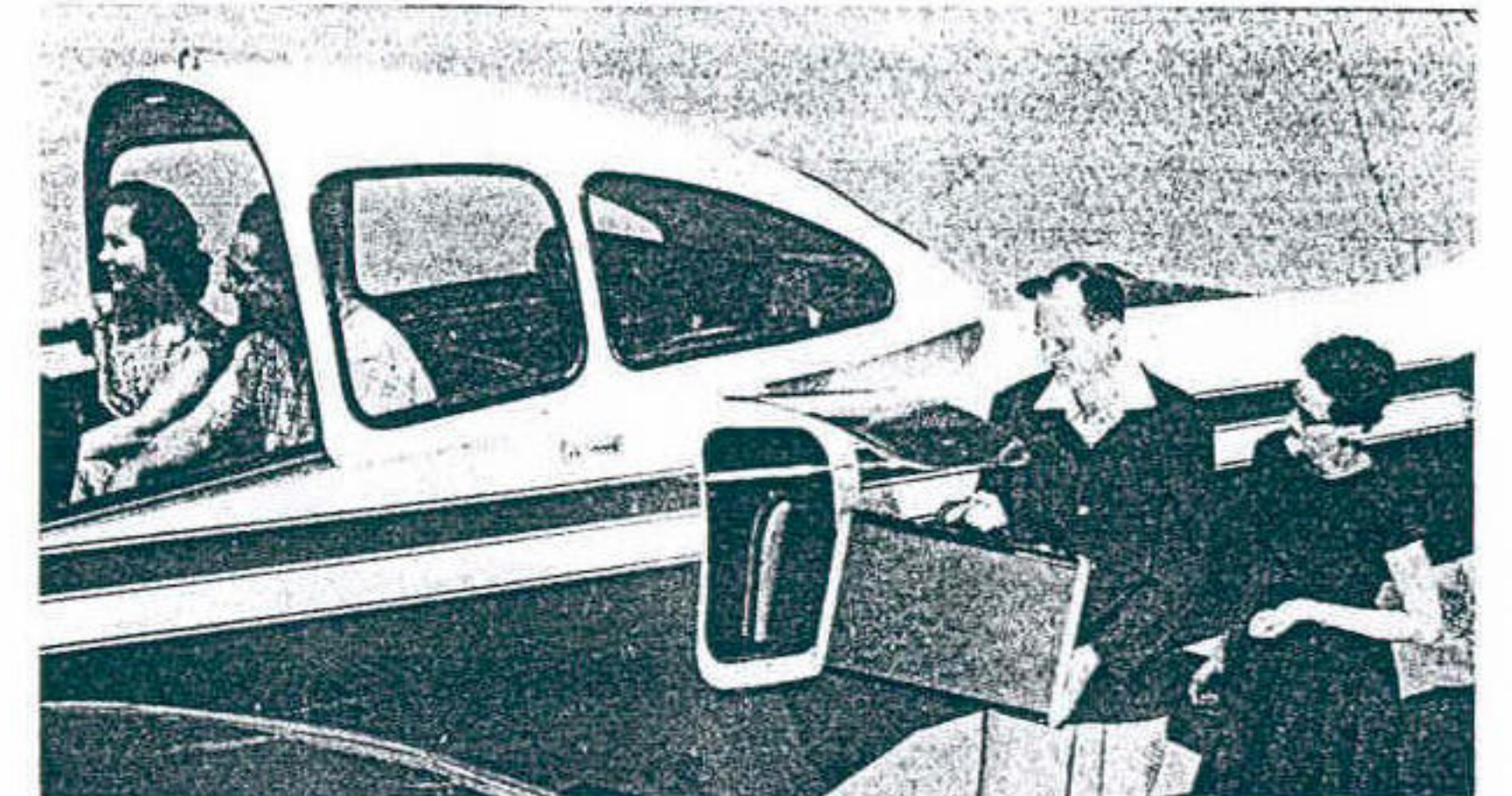
Look at the extras that the Riley TWIN gives you for safety and performance at low cost, enabling you to convert non-productive travel time into profitable working time. Engineered for maximum comfort, safety, and reliability, the Riley TWIN is built and backed by the skill and experience of Temco Aircraft Corporation — one of the country's leading aircraft manufacturers.



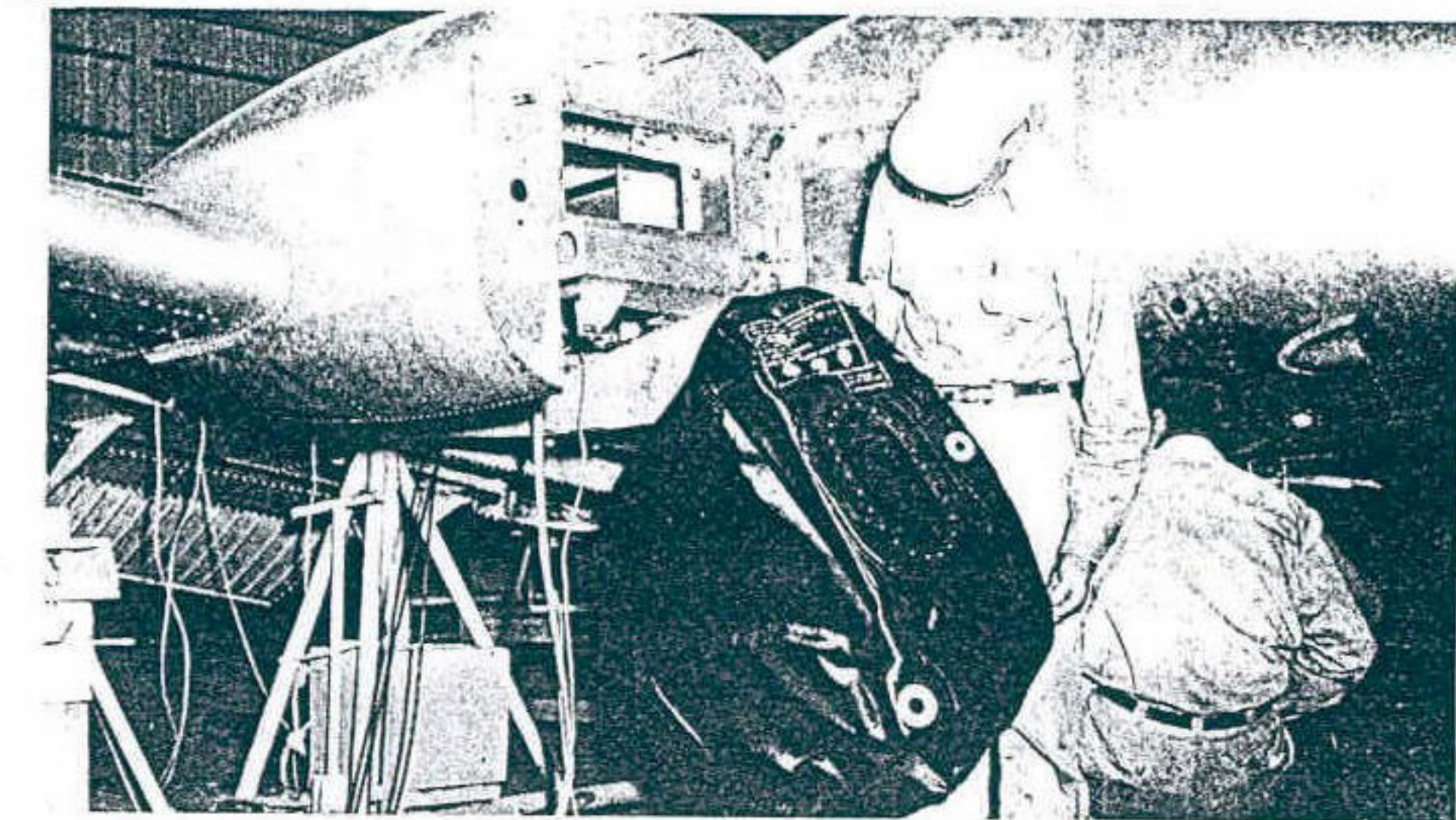
1. Roomy and beautiful interiors by Horton and Horton make long non-stop flights a pleasure. Foam-rubber upholstered, body-contoured front seats banish fatigue. Wide rear seat has convenient arm rests and extra elbow room.



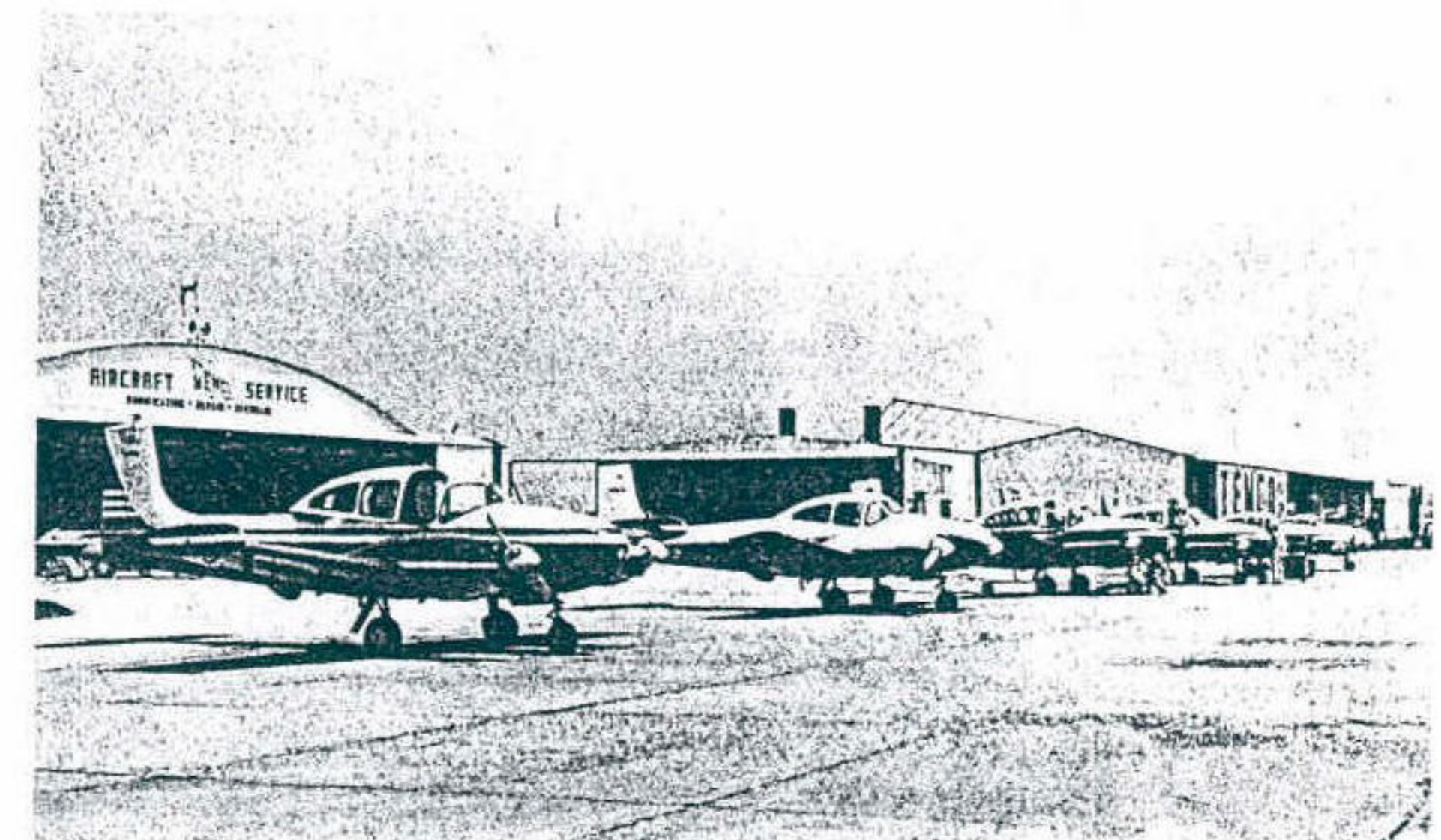
2. Pilot-planned instrument controls put everything where it should be, with plenty of room to add your own extras. Black crackle-finish and unobtrusive illumination make night flying a pleasure.



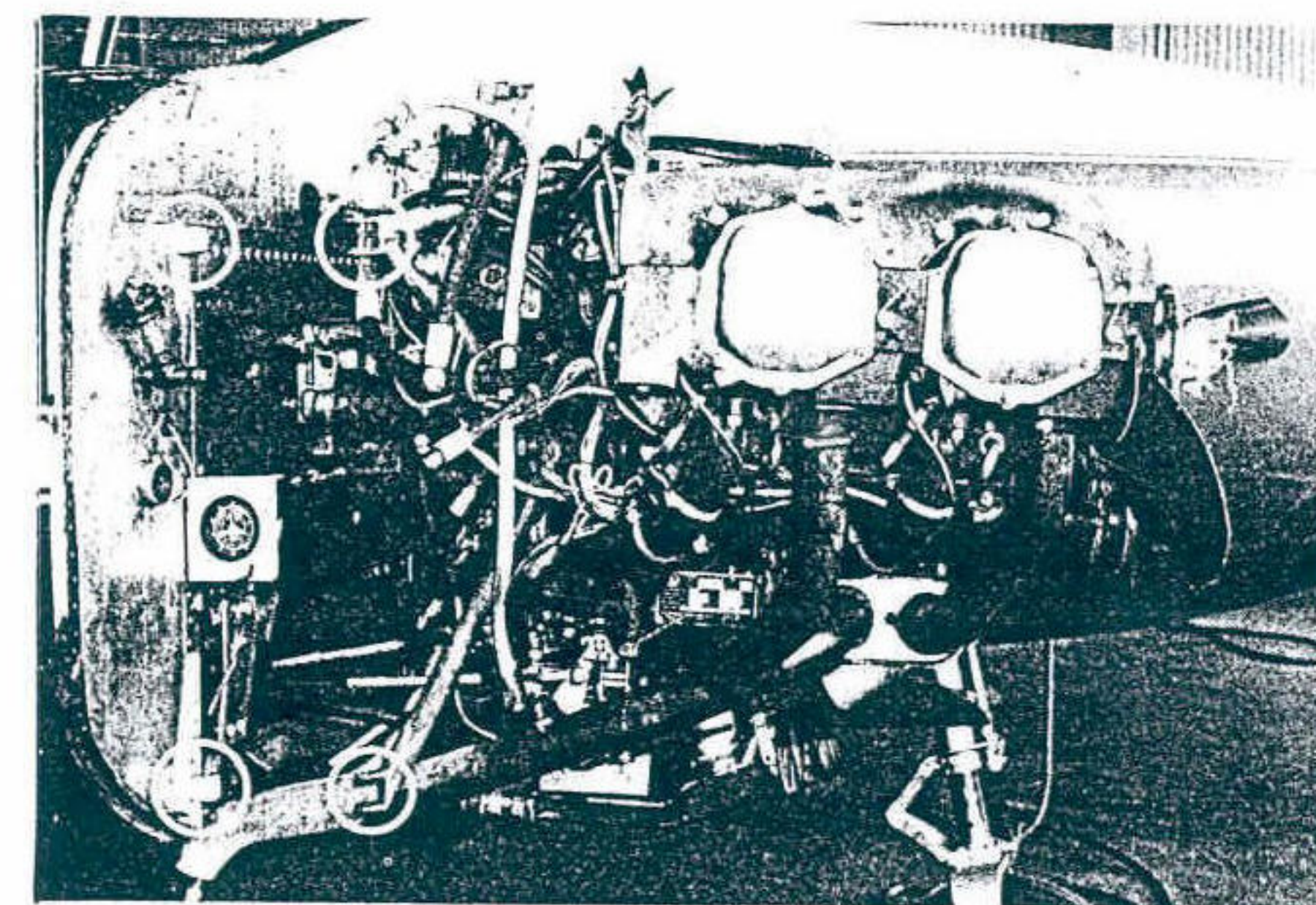
3. Roomy, easy-to-reach baggage compartments eliminate fuss and bother when you are ready to go. Extra room in the nose baggage compartment lets you separate overnight baggage.



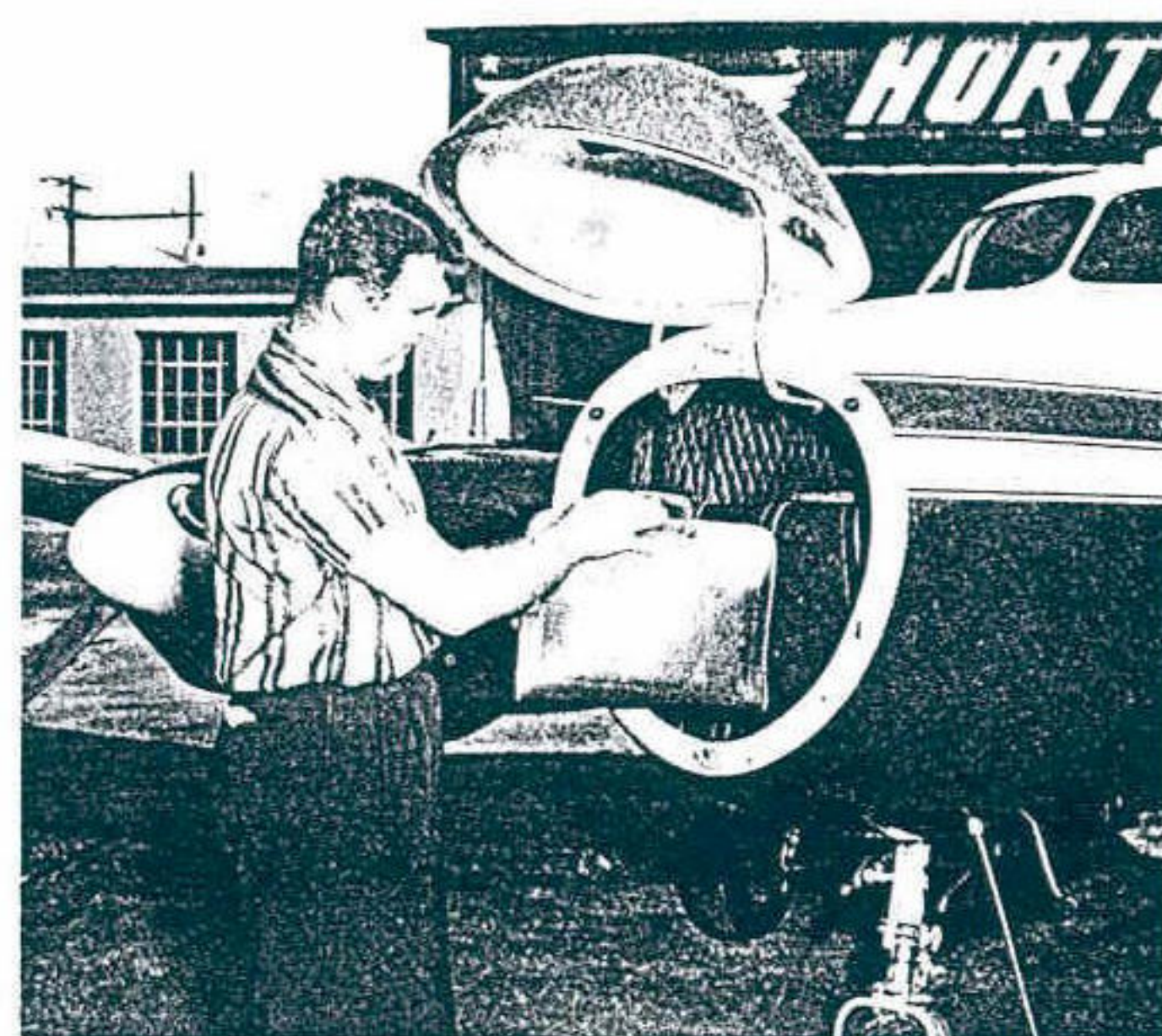
4. Added fuel carried in bladder-type, nylon-rubber cells installed in the engine nacelles means greater range. Located outside of the fuselage for greater safety, rugged fuel cells relieve you of maintenance worries.



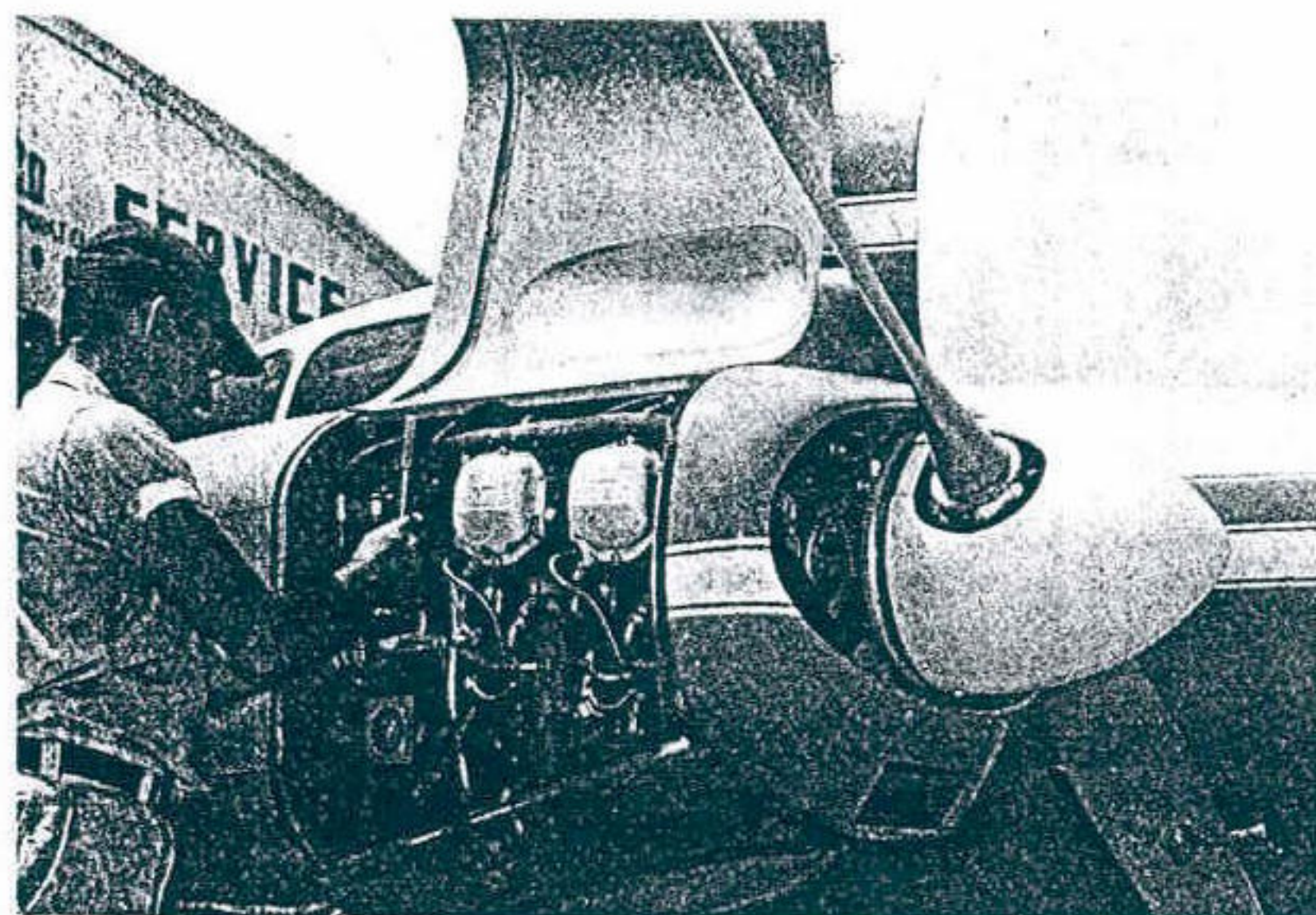
5. Your Riley TWIN is ready for you now. When you buy, you can count on immediate delivery from Temco's fast-moving production line. After you buy, you can confidently schedule your fully instrumented night flights, overwater hops, or long jaunts over mountainous terrain.



6. Riley TWIN engines are hinged to swing out free for instant accessibility, making repair and maintenance work quicker, easier. This is typical of the Riley TWIN extras that give you the maximum of convenience and performance.



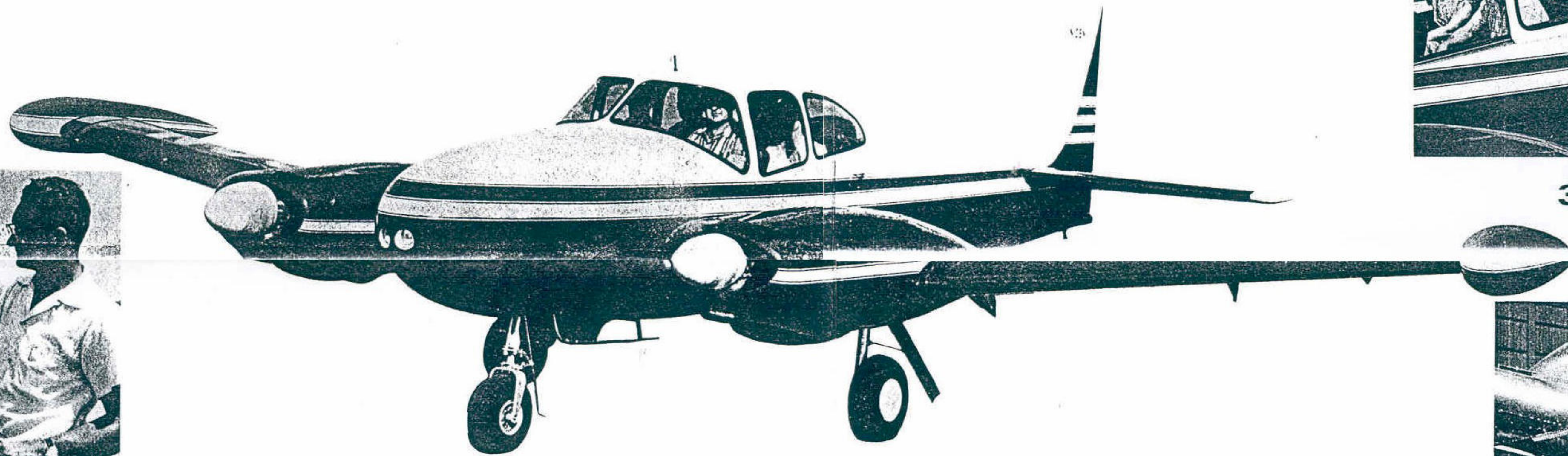
7. Space to spare is available in the Riley TWIN with the nose baggage compartment added to the generous baggage space in the after fuselage.



8. In a matter of seconds, engine covers bare the entire engine for repair or adjustment. It's as simple as lifting the hood of your car. Note that both sides open and remain up to save time and to speed work.



9. Wing-tip tanks are a bonus advantage over and above the value of added range with increased fuel supply. Convenient and always accessible, the Riley TWIN tip tanks are deceptively small and trim, yet add hours of flying time.



## REASONS FOR THE RILEY TWIN's LEADERSHIP

- new 170-HP Lycoming engines
- full-feathering, metal Hartzell propellers
- dual controls
- LTRA-6 radio
- landing lights
- cabin heater and fresh air ventilating system
- complete instrumentation
- nose taxi light
- navigation lights
- dome light
- indirect lighting for instrument panel
- steerable nose wheel
- new control quadrant and console
- custom interiors
- parking brake
- propeller spinners
- recording hour meter
- direct reading for all fuel tanks
- smartly styled wing tip tanks
- map light
- outside air temperature gauge
- cigarette lighter
- individual ash trays, arm rests
- full foam rubber seat cushions
- outside battery connection
- 25 cu. ft. baggage space
- 146 gal. fuel capacity all outside the fuselage
- powerful toe brakes
- electric booster pumps

### *Riley TWIN Performance Data*

- Two 170-HP Lycoming engines
- Empty weight: approximately 2350#
- Gross weight: 3600#
- Maximum speed: 180 mph.
- Cruise 70% power at 7,000 ft. 170 mph.
- Takeoff distance (zero wind @ gross wt. S. L. over 50 ft. obstacle) 1150 ft.
- Landing distance (zero wind @ gross wt. S. L. over 50 ft. obstacle) 1050 ft.
- Rate of climb: 1400 ft./min. (gross weight at S. L.)
- Range: more than 1200 miles
- Fuel consumption: 8.0 to 10 gal./hr./engine
- Service ceiling, 2 engines: 20,000 ft.
- Single engine ceiling: 6,000 to 8,000 ft.

